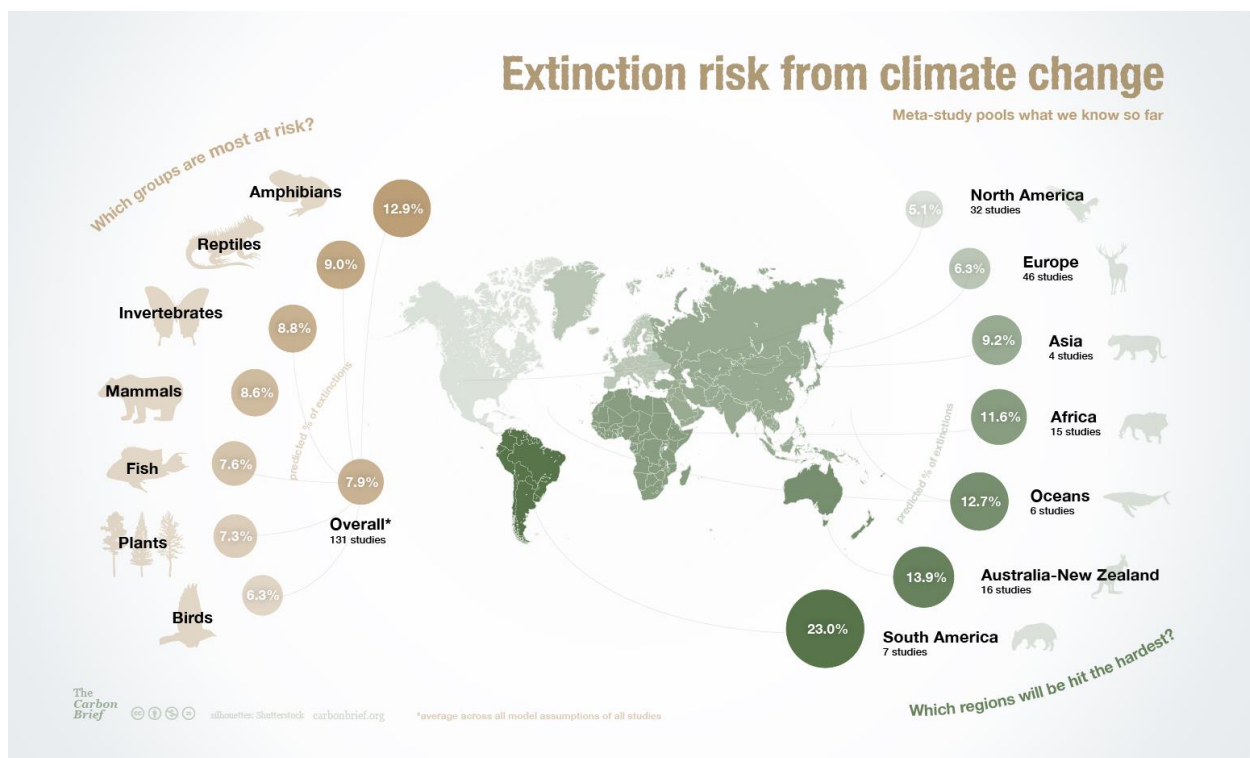
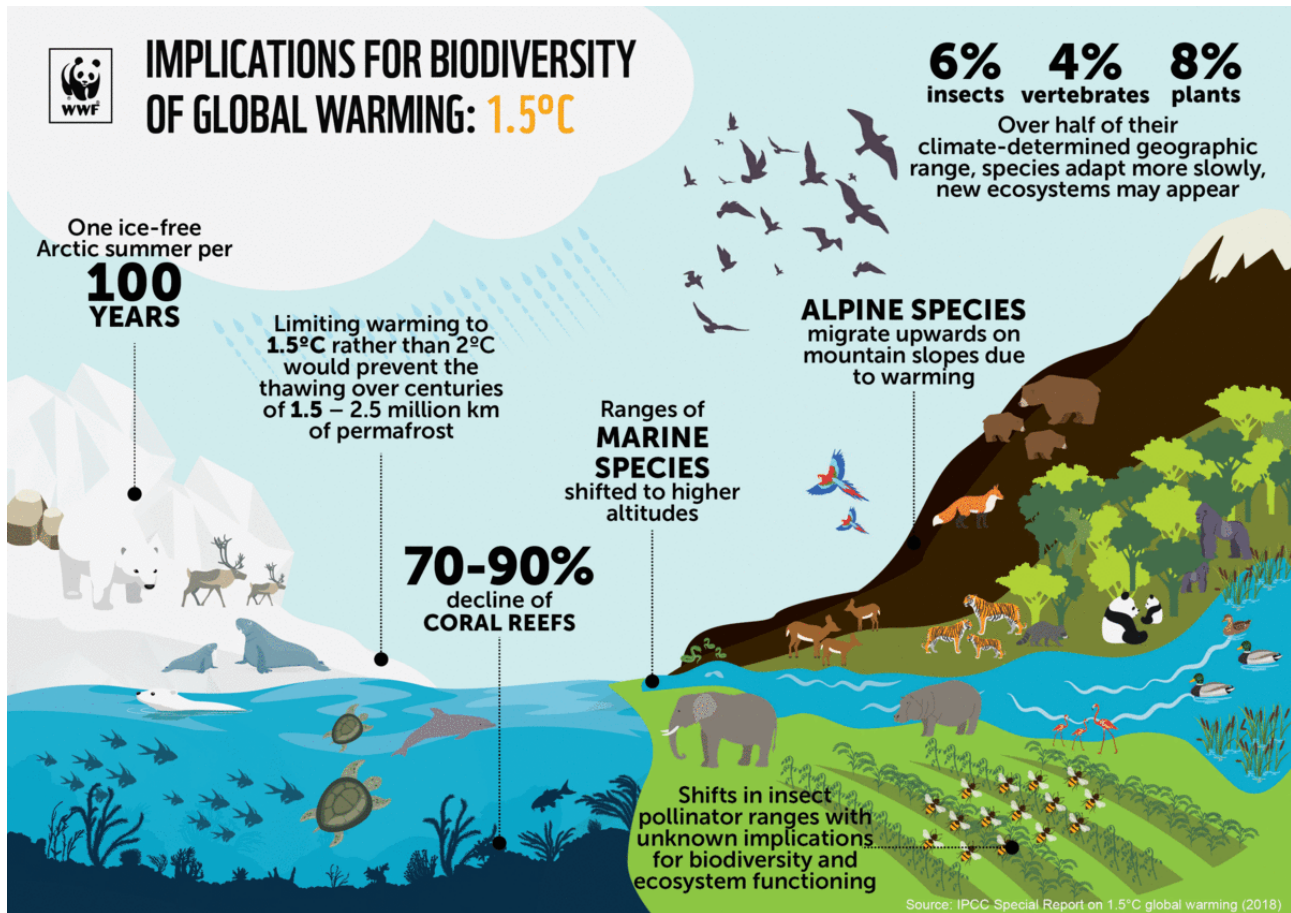




Climate Change & Wildlife

- **Climate change** refers to the **increasing changes in the measures of climate** (e.g., wind patterns, precipitation, temperature, extreme weather, lengths of seasons, etc.) **over long periods of time**. Global warming, the increase in Earth's average temperature, is only one aspect of climate change.
- Climate change **affects every animal and plant species** on this planet in some way. While some species are more tolerant to changes than others, many species are at an **increased risk of becoming extinct** due to direct and indirect threats towards their habitats and sources of food and water.
- Climate change also has a large impact on migration patterns and other seasonal behaviors of many animal species, as well as seasonal growth patterns of plant species.
- There have been dramatic changes in global climate before, however the current challenge to species and ecosystems from climate is not only the degree of change, but that **these changes are happening at much faster rates than ever before**. Rapid changes in environmental conditions are likely to exceed the ability of many fauna and flora species to adapt via natural selection.





Resources

- World Wildlife Fund: www.worldwildlife.org
- Climate Change Resource Center: <https://www.fs.usda.gov/ccrc/>
- Global Education Project: <https://www.theglobaleducationproject.org/climate-change/>
- US Environmental Protection Agency (EPA): www.epa.gov
- National Resources Defense Council: www.nrdc.org
- NASA: Climate Change: <http://climate.nasa.gov>
- NASA's Climate Kids: <http://climatekids.nasa.gov>
- World Conservation Network: <https://wildnet.org/>
- Wildlife Conservation Society: www.wcs.org
- Flora and Fauna International: www.fauna-flora.org
- IUCN Red List: www.iucnredlist.org
- Conservation International: www.conservation.org