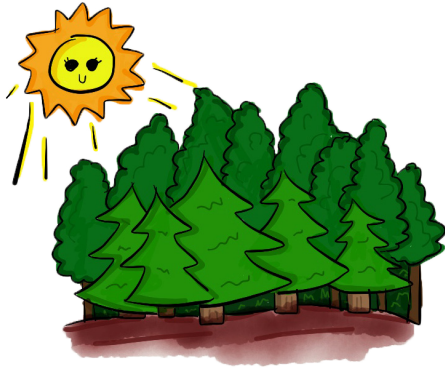


WHAT IS BIOMASS ENERGY?

Biomass fuels come from living things such as trees, plants and crop residue. As long as we continue to grow trees and plants and replace those we use by planting new ones, we will always have biomass fuels.

TAKE A LOOK AT HOW BIOMASS ENERGY IS PRODUCED.



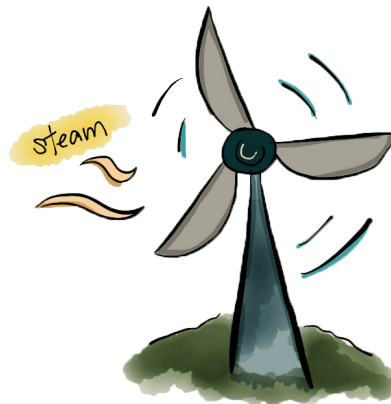
1

The original source of biomass fuels is from the sun. The energy is stored in trees and plants.



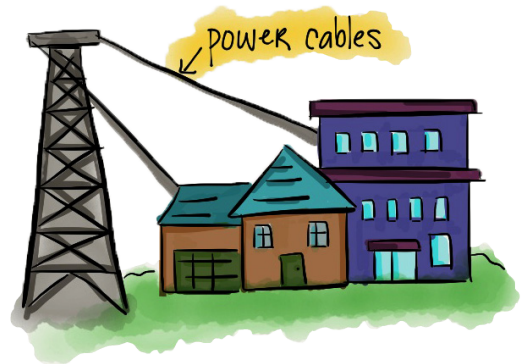
2

When trees or plants die or are cut down, they are burned.



3

Steam is released and moves blades inside a turbine or generator.



4

The power is then transferred to homes and businesses via cables.

★ THINK AND RESPOND ★

1. List 5 reasons why people cut down trees.

2. Why is it important that we plant new trees?
